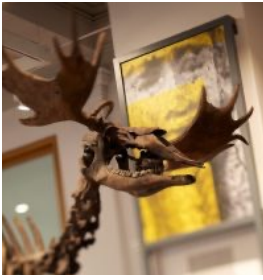


Horace Word Search



It's 50 years since the excavation of Horace, our elk skeleton. Horace is special because his 13,500 year-old skeleton is unusually complete. He's also the earliest evidence of humans in North West England.

Can you spot all of the the Horace-themed words in the grid?

O R L

A E M U H G J I K

U X G S Z W L B U L S I R

Q J Y A Q Y C X Y D Y A L V U Z P

F B Z E W N N R O V W X E J J N W L E

N C N C H O L A X W I M R X D G H V R X T

C D I E T L J A K U W N S K E L E T O N S

H J I A L X U I V I W P M J A O T Z F N T K P

U L Y U N J K G X I U L U V U R M V V I M R V

R N D O H K T L B D I S C O V E R P R E S T O N F

X T P C J B S L Q Q O H N O U C M I B M V G O Z R

R E P O G U H I E M M Y X R O Y M Q E R Q T Y K C

J U R I J F I U J X R G C P L B K R N S S E O D X O K

O C S Q P A O C R C C V P T H W S Z Y K L Q G B X E X

X P T I D I M X H A T N S N G W R Q G R E E E N G Q W

Z N G O G R K O V Z Z K D M I P L A Q N B O N E S

H K O B N O B R A M Q Q D Y M L C T X W D D Q B J

F Q L H I G H A T T B E D T Q S W T L K V S E V D

A T N D T Z C I G H D Q T B O I V L Y C T M T

B A R C H A E O L O G I S T I T V M Q D S Y H

Q G A D D U N C W S E B L F T V R N I V K

Y C Y Q G C X M H Y G L K R M H A F Z S M

A U H L R C W U C U O K R V G F P V E

B Q A R D E C W P L K B S A E B B

M Y I J Q Z N H U Y D X Q

G S I Y I N H Y P

Q Y B

ARCHAEOLOGIST
BONES
CARLETON
DISCOVER PRESTON

ELK
EXCAVATION
HORACE
HUNTERS

ICE AGE
INJURIES
POULTON
SKELETON